



REBEIRO CASTING
ESTD-1998

FOR THOMSON EQUIPMENTS APP

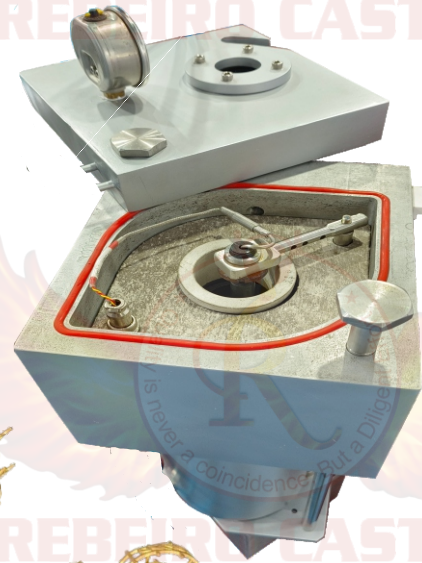


TE Thomson Equipments
ESTD-1998
"We Create Confidence Through Quality"

MFRS. OF: JEWELLERY & DENTAL CASTING MACHINES, INDUCTION HEATING SYSTEMS, HYDRAULIC PNEUMATIC CUTTERS, INVESTMENT MIXERS FOR GOLD, SILVER, PLATINUM, STEEL AND TITANIUM ETC.

VACUUM INDUCTION TABLE-TOP TURBO-PRESSURE CASTING MACHINE :

MODEL NO: PEARL VPC TURBO 500-T



FEATURES :

- Fully IGBT technology.
- Easy Casting with 100% mixing with Vacuum and Gas with process Indication.
- Three mode Casting:- Direct casting, Interval casting and Manual Casting with TURBO-PRESSURE Casting Feature.
- Down-pouring type Water cooled Melting Chamber.
- "K", "R" and "S" Type Thermocouple, Temperature Upto 1400 Deg. C.
- Microcontroller Based Touch screen Control Panel with 5000 Program memory with more excellent features.
- Water cooled Melting & Flask Chamber.
- Easy Installation due to compactness, Servicing and Calibration.
- Inbuilt Vacuum Guage and Pressure Guage.
- High efficiency and high performance with TURBO-PRESSURE Feature.
- Medium frequency Induction melting with excellent churning (auto stirring) for Jewellery Casting.

TECHNICAL SPECIFICATIONS :

Power Supply	: Single phase & three phase (220 V & 440 V).
Power Consumption	: 5 Kw.
Crucible Capacity	: 500 Grams.
Max. Melting Time	: 3 Mins.
Max. Temperature	: 1400 Deg. C.
Water Circulation	: 3 Ltrs. / Min.
Dimension	: 30" x 24" x 30" H.
Weight	: Approx. 60 Kg.

Unit No. 22, Plot No. 27, Makharia Industrial Complex, Off Mahakali Caves Road, Paper Box Road, MIDC, Andheri (E), Mumbai - 400 093 INDIA.

♦ E-mail: info@thomsonequipments.com / thomsonequipments1998@gmail.com / rebeirocasting@gmail.com

♦ Website : www.thomsonequipments.com ♦ Tel.: 022 49604189 ♦ Mob.: +91 9821115271